

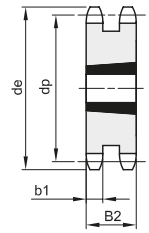
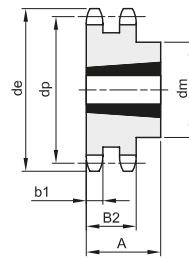
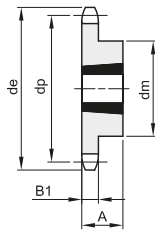
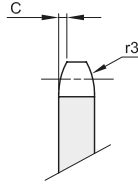


PIGNONI PER BUSSOLA CONICA - DIN 8187 - ISO 606

SPROCKETS FOR TAPER BUSHES - DIN 8187 - ISO 606

1"1/2 x 1"
38,1 x 25,4 mm
 Rullo 25,4 mm
24B - 1 - 2 - 3

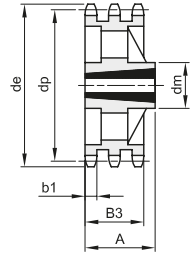
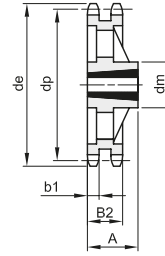
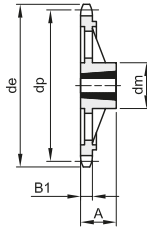
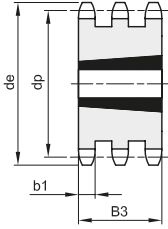
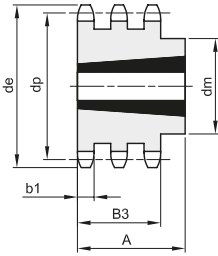
B1	B2	B3	b1	C	r3
24,1	72	120,3	23,6	4	38



1

2

3



4

5

6

7

8

Materiale: Acciaio C45 / *Materiale: Ghisa EN-GJL-200

Z	de	dp	semplici					doppi					tripli							
			codice	dm	A	Bussola	Tipo	Kg.	codice	dm	A	Bussola	Tipo	Kg.	codice	dm	A	Bussola	Tipo	Kg.
11	149,0	135,21	381420011	90	32	2012	1	1,70												
12	161,0	147,22	381420012	90	32	2012	1	2,16												
13	173,0	159,18	381420013	110	44	2517	1	2,77	382420013	72	2517	3	5,30							
14	185,0	171,22	381420014	120	44	2517	1	3,60												
15	197,0	183,26	381420015	120	44	2517	1	4,20	382420015	72	3020	3	6,60	383420015	120,3	3030	5	20,00		
17	221,0	207,34	381420017	140	51	3020	1	5,40	382420017	72	3020	3	10,30	383420017	120,3	3030	5	25,00		
18	233,0	219,42	381420018	140	51	3020	1	6,10												
19	245,5	231,49	381420019	140	51	3020	1	6,85	382420019	160	76	3030	2	14,80	383420019	120,3	3535	5	30,00	
20	257,5	243,57	381420020	140	51	3020	1	7,76												
21	270,5	255,65	381420021	140	51	3020	1	8,52	382420021	160	76	3030	2	19,50	383420021	120,3	4040	5	35,00	
23	294,5	279,80	381420023	160	51	3020	1	11,31	382420023	175	89	3535	2	24,00	383420023	120,3	4040	5	44,00	
25	319,0	304,00	381420025	160	51	3020	1	13,33	382420025	175	89	3535	2	29,00	383420025	120,3	4040	5	50,00	
30	379,5	364,50	381420030	160	51	3020	1	19,00	382420030	175	89	3535	2	40,00	383420030	120,3	4040	5	60,00	
38*	476,5	461,39	381420038	160	76	3030	6	24,00	382420038	175	89	3535	7	44,00	383420038	120,3	4040	8	66,00	
57*	707,5	691,63	381420057	160	76	3030	6	45,00	382420057	175	89	3535	7	72,00	383420057	120,3	4545	8	120,00	
76*	939,0	921,98	381420076	175	89	3535	6	70,00	382420076	216	102	4040	7	107,00	383420076	120,3	4545	8	131,00	