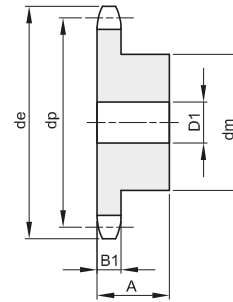
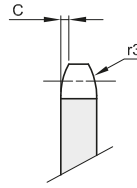




PIGNONI PER CATENE A RULLI - DIN 8188 - ISO 606 - ANSI B 29.1
SPROCKETS FOR ROLLER CHAINS - DIN 8188 - ISO 606 - ANSI B 29.1

ASA 120

38,1 x 25,4 mm
Rullo 22,23 mm
24A - 1



B1	B2	B3	b1	C	r3
23,5				4,8	40,5

Materiale: Acciaio C45 / *Materiale: Fe - con mozzo saldato

Z	de	dp	semplici				doppi				tripli							
			codice	dm	D1	A	Kg.	codice	dm	D2	A	Kg.	codice	dm	D3	A	Kg.	
8	113,0	99,55																
9	125,0	111,40																
10	137,0	123,29	131120010	80	20	45	2,67											
11	149,0	135,21	131120011	90	25	50	3,45											
12	161,0	147,22	131120012	102	25	50	4,26											
13	173,0	159,18	131120013	114	25	50	5,22											
14	185,0	171,22	131120014	128	25	50	6,29											
15	197,0	183,26	131120015	132	25	50	7,05											
16	209,0	195,30	131120016	136	25	55	8,41											
17	221,0	207,34	131120017	140	25	55	9,26											
18	233,0	219,42	131120018	140	25	55	9,95											
19	245,5	231,49																
20	257,5	243,57	131120020	140	25	55	11,56											
21	270,5	255,65																
22	282,5	267,73																
23	294,5	279,80																
24	307,0	291,88																
25	319,0	304,00	131120025	150	30	60	17,70											
26	331,0	316,08																
27	343,0	328,19																
28	355,0	340,27																
29	367,5	352,38																
30	379,5	364,50																
31	391,5	376,62																
32	403,5	388,69																
33	415,5	400,81																
34	428,0	412,93																
35	440,0	425,04	131120035	*150	30	60	30,01											
36	452,0	437,16																
37	464,0	449,27																
38	476,5	461,39																
39	488,5	473,50																
40	501,5	485,62																