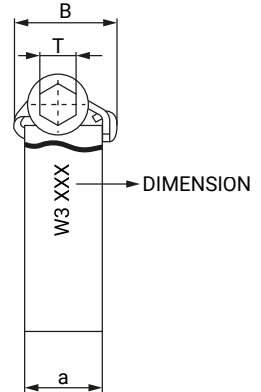
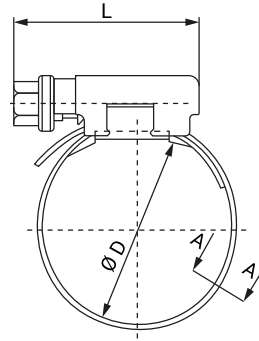


SECTION A-A



Mikalor High-Torque Clamps were designed to guarantee maximum performance in the most demanding applications. Thanks to the use of an M8 screw and the choice of 16mm bandwidth, torque values can be applied which are far higher than those used with the standard ASFA range, thereby ensuring perfect performance in high-pressure applications.

The High-Torque clamp is particularly popular in industrial and automotive applications due to its outstanding performance. The perfectly rounded bevelled band edges avoid the clamp cutting into or damaging the hose.

MATERIAL: W3 Stainless steel X6Cr 17
DIN 1.4016 AISI 430
Bolt: Stainless steel
AISI 304 Cu

CORROSION RESISTANCE: 200 hours salt spray
(ASTM B-117)

Ø D mm	Part Number	L Max.	S ±0.1	H Max.	a ±0.2	B Max.	T	Max. Par Nm	Max. Pressure Bar	Box Quantity	Outer Box Quantity
25-45	03066001	40	0,85	14	16	22	8	12	55	50	50
32-54	03066002	40	0,85	14	16	22	8	12	50	50	50
45-67	03066003	40	0,85	14	16	22	8	12	45	50	50
57-79	03066004	40	0,85	14	16	22	8	12	40	50	50
70-92	03066005	40	0,85	14	16	22	8	12	30	50	50
83-105	03066006	40	0,85	14	16	22	8	12	20	25	25
95-118	03066007	40	0,85	14	16	22	8	12	17	25	25
108-130	03066008	40	0,85	14	16	22	8	12	14	25	25
121-143	03066009	40	0,85	14	16	22	8	12	11	25	25
133-156	03066010	40	0,85	14	16	22	8	12	8	25	25
146-168	03066011	40	0,85	14	16	22	8	12	6	25	25
159-181	03066012	40	0,85	14	16	22	8	12	5	25	25
172-194	03066013	40	0,85	14	16	22	8	12	4	25	25
184-206	03066014	40	0,85	14	16	22	8	12	3	25	25
197-219	03066015	40	0,85	14	16	22	8	12	2	25	25
210-232	03066016	40	0,85	14	16	22	8	12	2	25	25