

# C198



PA6  
+G.F.

UL94  
HB

RoHS  
COMPLIANT

## SOLID CONTROL HANDWHEEL WITH REVOLVING FOLDING HANDLE

### Materials:

Reinforced and stabilized polyamide.  
Resistant to oils and greases.

Surface finish: **Satin.**

Colour: **Black (RAL 9011).**

### Central cap:

Grey polyamide (RAL 7035). 13).

### Alternative cap colours:

Orange (RAL 2004 code 02).  
Blue (RAL 5015 code 07).  
Yellow (RAL 1021 code 10).  
Red (RAL 3000 code 16).  
Green (RAL 6024 code 17).  
Black (RAL 9011 code 01).

### Main insert:

Galvanised steel insert with smooth through bore (tolerance H10).

### Lateral insert:

Brass insert with threaded through hole.

### Lateral handle:

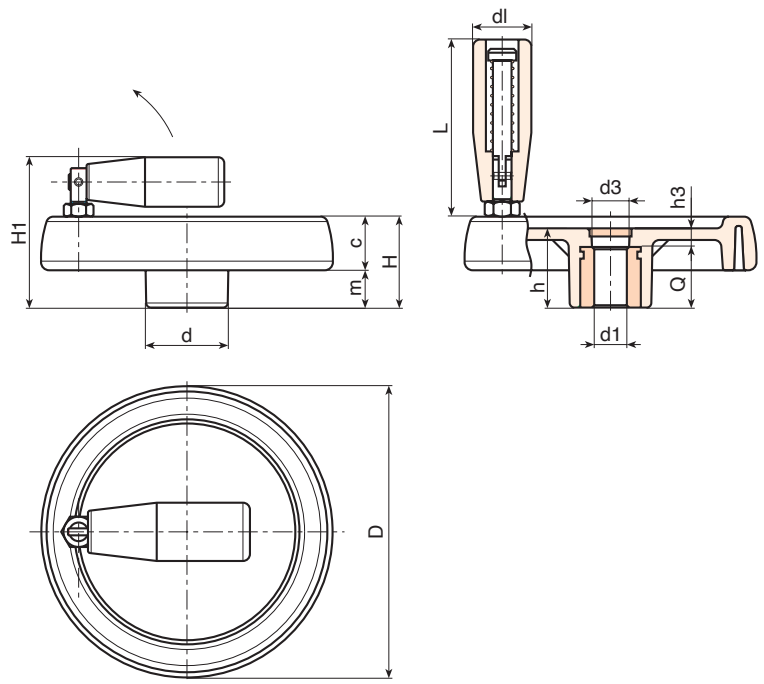
Revolving, folding handle art. M136 [page ].

### Fixing method:

For fixing systems, or execution of keyways or square holes, please refer to the technical notes attached to the catalogue [page ].

### Special requests:

- On request and with a minimum of 50 pieces, the inserts can be supplied with the hole d1 with H7 tolerance and black-oxide finish. Add the letters ZB to the standard code. Example: C198100.TD1001PZB.
- Upon request and for special quantities inserts can be supplied with custom hole diameter d1.
- Upon request and for special quantities inserts can be supplied in different materials/with different coatings.
- Upon request and for special quantities handwheels, handles and caps are available in the colours indicated in the chart (attention: reduced range) [page ].



Code	Art.	D	H	H1	h	d	m	c	d3	h3	dl	L	Dm	d1 H10	Q	g
-	C198080.TP0501P	81	33	57	29	25	16	17	16	9	20	56	12	5	20	145
-	C198080.TD0801P	81	33	57	29	25	16	17	16	9	20	56	12	8	20	144
-	C198080.TD1001P	81	33	57	29	25	16	17	16	9	20	56	12	10	20	143
-	C198080.TD1201P	81	33	57	29	25	16	17	16	9	20	56	12	12	20	143
-	C198100.TP0501P	100	39	63	34	30	18.5	20.5	16	10	20	56	16	5	24	235
-	C198100.TD1001P	100	39	63	34	30	18.5	20.5	16	10	20	56	16	10	24	233
-	C198100.TD1201P	100	39	63	34	30	18.5	20.5	16	10	20	56	16	12	24	232
-	C198125.TP0501P	125	44	74	37	36	20	24	26	13	25	76	18	5	24	360
-	C198125.TD0801P	125	44	74	37	36	20	24	26	13	25	76	18	8	24	358
-	C198125.TD1201P	125	44	74	37	36	20	24	26	13	25	76	18	12	24	355
-	C198125.TD1401P	125	44	74	37	36	20	24	26	13	25	76	18	14	24	353
-	C198125.TD1501P	125	44	74	37	36	20	24	26	13	25	76	18	15	24	352
-	C198150.TD0801P	150	54	89	44	38	25	29	26	12	26	89	22	8	32	670
-	C198150.TD1201P	150	54	89	44	38	25	29	26	12	26	89	22	12	32	665
-	C198150.TD1401P	150	54	89	44	38	25	29	26	12	26	89	22	14	32	663
-	C198150.TD1801P	150	54	89	44	38	25	29	26	12	26	89	22	18	32	655
-	C198175.TD0801P	173	57	92	47	40	25.5	31.5	26	15	26	97	22	8	32	810
-	C198175.TD1601P	173	57	92	47	40	25.5	31.5	26	15	26	97	22	16	32	800
-	C198175.TD2001P	173	57	92	47	40	25.5	31.5	26	15	26	97	22	20	32	797
-	C198200.TD0801P	202	59	94	49	44	24	35	27	13	26	97	28	8	36	1030
-	C198200.TD1401P	202	59	94	49	44	24	35	27	13	26	97	28	14	36	1020
-	C198200.TD1801P	202	59	94	49	44	24	35	27	13	26	97	28	18	36	1018
-	C198200.TD2001P	202	59	94	49	44	24	35	27	13	26	97	28	20	36	1015
-	C198250.TD0801P	249	68	100	58	59	29	39	36	22	26	97	28	8	36	1580

Attention: For a minimum of 50 pieces the diameter d1 can be customised (hole tolerance H10 galvanised and H7 black-oxide treated).  
Dm = Maximum obtainable diameter for subsequent machining (widening).