

# D214



## THREE-ARM CONTROL HANDWHEEL WITH SMOOTH OR THREADED HOLE

### Materials:

Reinforced and stabilized polyamide.  
Resistant to oils and greases.

### Surface finish:

Satin.

### Colour:

Black (RAL 9011).

### Central cap:

Grey polyamide (RAL 7035). 13).

### Alternative cap colours:

Orange (RAL 2004 code 02).  
Blue (RAL 5015 code 07).  
Yellow (RAL 1021 code 10).  
Red (RAL 3000 code 16).  
Green (RAL 6024 code 17).  
Black (RAL 9011 code 01).

### Main insert:

#### Version TD:

Galvanised steel insert with smooth through bore (tolerance H10).

#### Version TM:

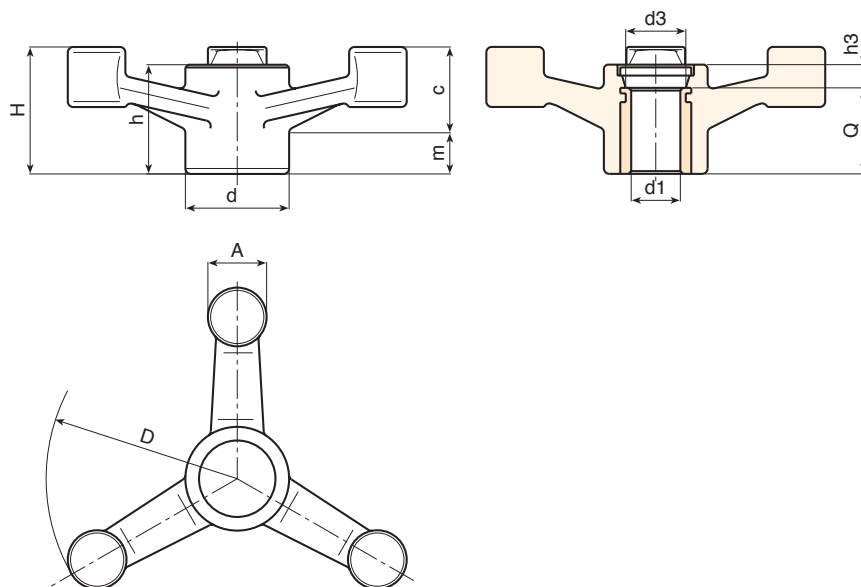
Galvanised steel insert with threaded through hole (thread tolerance 6H).

### Fixing method:

For fixing systems, or execution of keyways or square holes, please refer to the technical notes attached to the catalogue [page ].

### Special requests:

- Upon request and for a minimum of 50 pieces inserts can be supplied with hole d1 with tolerance H7 and black oxide treated finish. Add letters ZB to the standard code. Example: D214140.TD1301PZB.
- Upon request and for special quantities inserts can be supplied with custom hole diameter d1.
- Upon request and for special quantities the handwheel can be supplied in Orange (RAL 2004 Code 02).
- Upon request and for special quantities inserts can be supplied in different materials/with different coatings.



### Version TD with insert and smooth through bore (tolerance H10).

| Code | Art.            | D   | H  | h    | d  | m  | c  | A  | h3   | d3 | Dm | d1 <sub>H10</sub> | Q  |     |
|------|-----------------|-----|----|------|----|----|----|----|------|----|----|-------------------|----|-----|
| -    | D214140.TD0801P | 137 | 45 | 39.5 | 38 | 19 | 26 | 22 | 7.5  | 26 | 22 | 8                 | 32 | 200 |
| -    | D214140.TD1201P | 137 | 45 | 39.5 | 38 | 19 | 26 | 22 | 7.5  | 26 | 22 | 12                | 32 | 196 |
| -    | D214180.TD0801P | 177 | 56 | 42.5 | 38 | 20 | 35 | 23 | 10.5 | 26 | 22 | 8                 | 32 | 280 |
| -    | D214220.TD0801P | 221 | 61 | 46   | 38 | 22 | 39 | 25 | 14   | 26 | 22 | 8                 | 32 | 340 |
| -    | D214220.TD1801P | 221 | 61 | 46   | 38 | 22 | 39 | 25 | 14   | 26 | 22 | 18                | 32 | 325 |

Attention: For a minimum of 50 pieces the diameter d1 can be customised (hole tolerance H10 galvanised and H7 black-oxide treated).

Dm = Maximum obtainable diameter for subsequent machining (widening).

### Version TM with insert and threaded through hole.

| Code | Art.            | D   | H  | h    | d  | m  | c  | A  | h3   | d3 | d1 <sub>6H</sub> | Q  |     |
|------|-----------------|-----|----|------|----|----|----|----|------|----|------------------|----|-----|
| -    | D214140.TM1201P | 137 | 45 | 39.5 | 38 | 19 | 26 | 22 | 7.5  | 26 | M12              | 32 | 197 |
| -    | D214140.TM1601P | 137 | 45 | 39.5 | 38 | 19 | 26 | 22 | 7.5  | 26 | M16              | 32 | 193 |
| -    | D214180.TM1601P | 177 | 56 | 42.5 | 38 | 20 | 35 | 23 | 10.5 | 26 | M16              | 32 | 275 |
| -    | D214180.TM1801P | 177 | 56 | 42.5 | 38 | 20 | 35 | 23 | 10.5 | 26 | M18              | 32 | 270 |
| -    | D214220.TM1401P | 221 | 61 | 46   | 38 | 22 | 39 | 25 | 14   | 26 | M14              | 32 | 335 |
| -    | D214220.TM1601P | 221 | 61 | 46   | 38 | 22 | 39 | 25 | 14   | 26 | M16              | 32 | 333 |
| -    | D214220.TM1801P | 221 | 61 | 46   | 38 | 22 | 39 | 25 | 14   | 26 | M18              | 32 | 330 |

Attention: for a minimum of 50 pieces the diameter d1 can be produced with the requested dimensions.